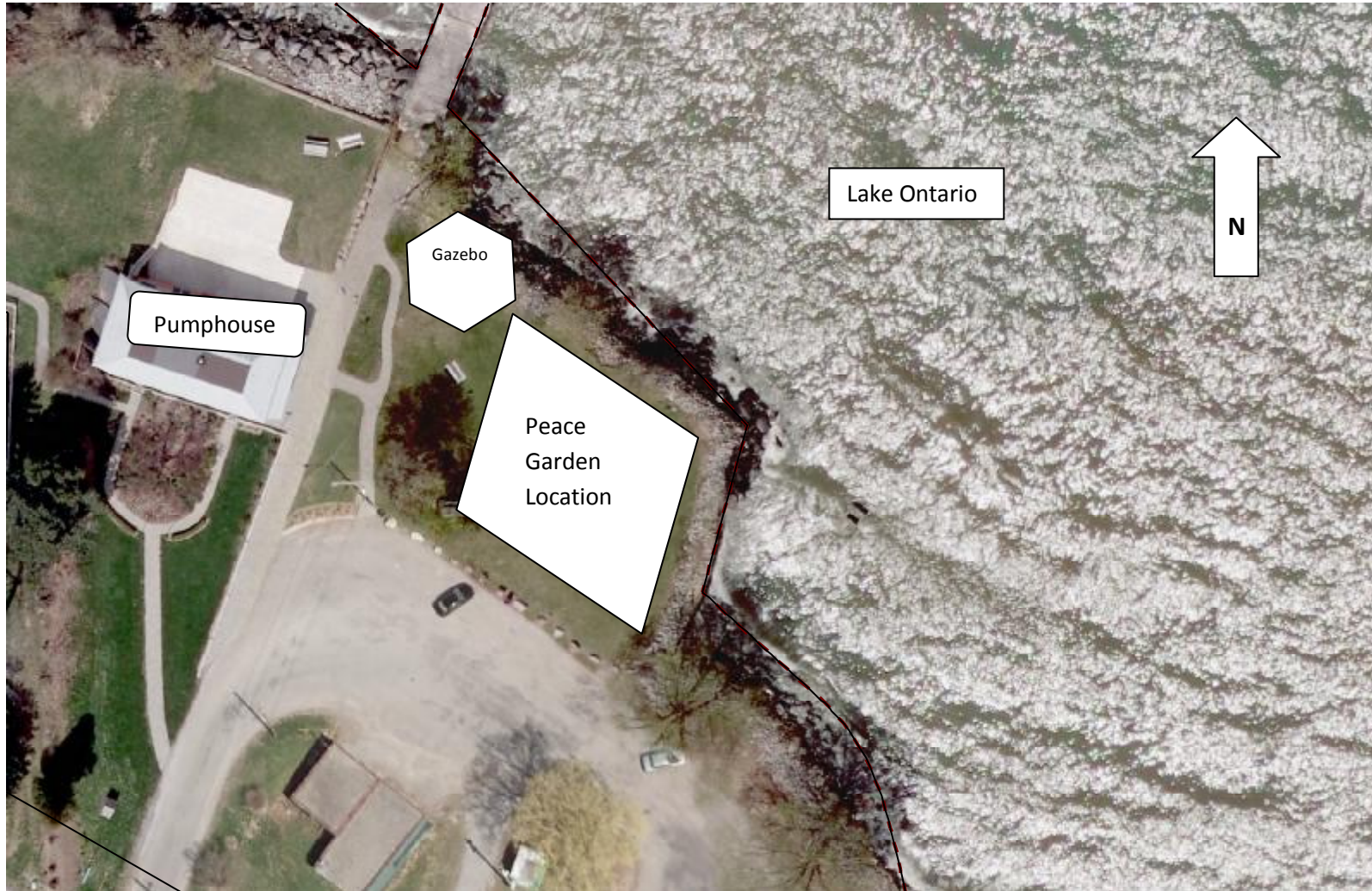


Grimsby Peace Garden Project



447 Elizabeth Street, Grimsby ON (Grimsby Pumphouse/Forty Mile Creek Park)

Currently open space (parkland) abutting Grimsby Pumphouse House Community Hall. Historical Site – “Engagement at the Forty”

Public garden (+/- 5,000 square feet) area - fee access and parking. Parking for approximately 300 vehicles.

Garden design – TBD